
PARKING UPDATE #1 - May 29, 2013

From Waye Mason, Councillor

It has been some time since we met and set out a plan to address parking issues in downtown. Here are the results so far – in this update I am focusing on short term. Mid June or so I will update you again on short term, and then also medium/long term issues.

1 – work to maximize on street parking

On May 2nd I was joined by Laura Healy from AED, Luc Erjavec from CRFA, Brianna Colford from RANS and Paul MacKinnon from Downtown Halifax. We did a walk about with Taso Koutralakis and Patrick Hatton. We walked Argyle Street , Barrington, Granville, Bedford Row and the east/west streets looking at loading zones, parking metres, etc.

What we found: maybe 15 metre heads that were missing (damaged during snow removal? Backed into by a car?) and a number of areas where loading and parking could be adjusted. Overall most blocks were well covered, with just a few places where changes could be consider.

Recommendations/results:

- business owners are encouraged to call 311 and then inform my office if they have questions about a metre having gone missing. If citizens call the issue will get addressed faster. There are some, but not many, parking spots that could be reclaimed each spring.

2 – signage to off street parking

HRM staff met with me May 10th and are happy to implement an aggressive re-signing of downtown at HRM's cost. Signs will continue to be the green P signs that are currently in use. Privates and WDL indicated willingness to share cost but this will not be required.

What we found: Older signs (green on white) in the Spring Garden Area will be upgraded to the standard. Private parkers use, generally, non-standard wayfinding icons.

Recommendations/results:

- staff are producing a plan for 20-30 new parking signs starting on the approaches to downtown/SGA maybe 200-300 metres out. This will be sent to stakeholders for comment (around June 10th or so)
- Parking owners are encouraged to replace and/or incorporate a white P on green background into the signs on their lots/buildings, so there is consistency.

3 – promote availability of off street parking (customers and business owners)

We now know numbers in terms of parking. The next stage is letting our customers know.

What we found: At noon there are 796 off street stalls available off street within a five minute walk of Grand Parade and 354 a five minute walk from Spring Garden and Dresden. (see Figures 1, 2, and 3).

This does not include any on street parking at metres. It also does NOT include the southern WDCL surface lots, or the Casino parkade, as both are just outside the five minute

radius. Simply put there is plenty of off street parking. Problem is that it is spread all over the multi-story garages.

While there may be medium term problems with parking as WDCL builds on its surface lots and the second sister's site builds on Clyde, right now there is ample parking.

Recommendation/results:

- all stakeholders need to work together to get the message out "there is parking off street" to the public
- parking owners are encouraged to take steps to drive monthly parkers away from premium at grade parking that shoppers can use.

4 - enforcement

What we found: enforcement is a dynamic where there are also significant downsides to giving the ticket givers too much leeway.

Recommendations/results:

- Staff have spoken to the contractor about customer service issues (no waiting around for a metre to turn, no ticketing stopped cars with people sitting in them).
- Merchants are reminded that tickets will ALWAYS be issued in a No Stopping zone, but that No Parking zones can be used for loading.
- Customers should be encouraged at all times to use off street parking.

5 - advertising

Not complete.

SGA and Downtown can lead with stakeholders to advertise, probably this needs to wait until street signs go in.

NOTE: is there interest cost sharing in a digital sign or two at the entrance to downtown showing empty stalls available at major lots? Maybe three? One Barrington, one Hollis, one South Park or SGR, that looks like the ones that Crombie has installed at Scotia Square?

6 - leverage HRM owned Metropark

Talk about fee harmonization, over night rates, was discussed.

What we found: Metropark does usually have some parking even at noon, though only 10-20 on busy days, and the rates at MP are some of the lowest in downtown. Metropark does not have a mechanism to encourage monthly parkers to park away from grade. It will take further work to introduce new programs.

Recommendations/results: In mid June I will be meeting with the Deputy CAO and staff to obtain more flexibility at Metropark.

Figure 1: Parking within 2 and five minutes of Grand Parade.



Figure 2 Parking within 2 and 5 minutes of Spring Garden/Dresden

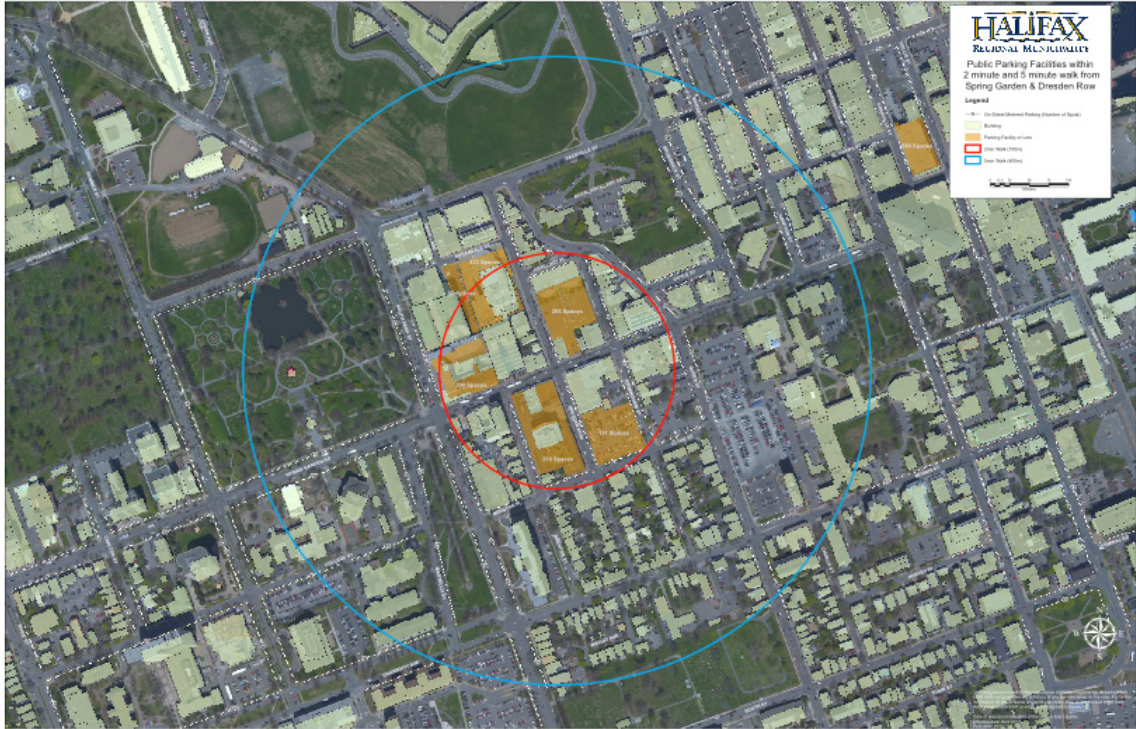


Figure 3 – Parking Facts and Figures

Public Parking Facilities, Downtown Halifax, Spring Garden, Barrington South

Company	Address	Spaces	Available Lunch	Hourly Rate	Daily Rate	Overnight rate	Monthly Rate	Weekend Rate
Within 2 minute walk from Grand Parade								
Halifax Developments - Scotia Square	5201 Duke Street	1700	350	\$ 4.00	\$ 20.00	\$ 6.00	\$ 181.00	\$ 5.00
Prince George Hotel	1725 Market Street	140	0	\$ 4.00	\$ 20.00	n/a	n/a	n/a
On Street Metered Parking	n/a	121	n/a	\$ 3.00	n/a	n/a	n/a	n/a
Sub-total		1,961	350					
Within 5 minute walk from Grand Parade								
Casino Nova Scotia	1983 Upper Water Street	550	190	\$ 3.00	\$14 & \$10	\$ 8.00	n/a	n/a
Metro Park	1557 Granville Street	589	20	\$3 1st after \$2.25	\$ 15.00	\$ 6.00	\$ 147.83	\$ 6.00
GWL (Purdy's)	1949 Upper Water Street	1086	172	\$ 3.00	\$14 & \$10	\$ 8.00	\$ 166.75	n/a
Marriott Waterfront Hotel	1919 Lower Water Street	210	0	\$ 4.00	\$23.00	n/a	n/a	n/a
Waterfront Development Corporation Ltd.	Cable Wharf to Foundation	541	64	\$ 3.00	\$ 16.00	\$ 6.00	\$ 140.00	n/a
On Street Metered Parking	n/a	380	n/a	\$ 3.00	n/a	n/a	n/a	n/a
Sub-total		2,976	446					
Downtown Total		4,937	796					

Company	Address	Spaces	Available Lunch	Hourly Rate	Daily Rate	Overnight rate	Monthly Rate	Weekend Rate
Within a 5 minute walk of Spring Garden and Dresden								
Park Lane	5557 Annandale Street	433	135	\$ 4.00	\$ 20.00	\$ 6.00	\$ 145.00	\$ 5.00
Annandale Outdoor Lot	Annandale Street	50	0	\$ -	\$ 8.00	n/a	n/a	n/a
City Centre Atlantic	1535 Dresden Row	130	10	\$ 1.75	\$ 10.00	n/a	\$ 159.00	n/a
Spring Garden Place	1456 Dresden Row	310	50	\$ 2.50	\$ 17.50	n/a	\$ 149.50	n/a
Dresden Lot	1949 Upper Water Street	131		\$ 2.00	\$ 16.00	n/a	n/a	n/a
Paramount	1539 South Park Street	300	35	\$ 3.00	\$ 25.00	n/a	\$ 155.00	n/a
On Street Metered Parking	n/a	458	n/a	\$ 3.00	n/a	n/a	n/a	n/a
Spring Garden Sub Total		1,812	230					

Company	Address	Spaces	Available Lunch	Hourly Rate	Daily Rate	Overnight rate	Monthly Rate	Weekend Rate
Barrington South/Pier								
Waterfront Development Corporation Ltd.	Salter to Cunard	570	344	\$ 3.00	\$ 16.00	\$ 6.00	\$ 140.00	n/a
Via Station	Marginal Road	130	10	\$ 2.00	\$ 6.00	\$ 4.00	\$ 80.00	n/a
Sub-total		700	354					

Total for Downtown/Spring Garden/Barrington South	7,449	1,380
--	--------------	--------------